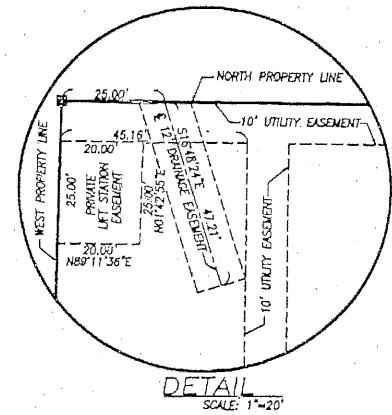


BRAMAN HONDA

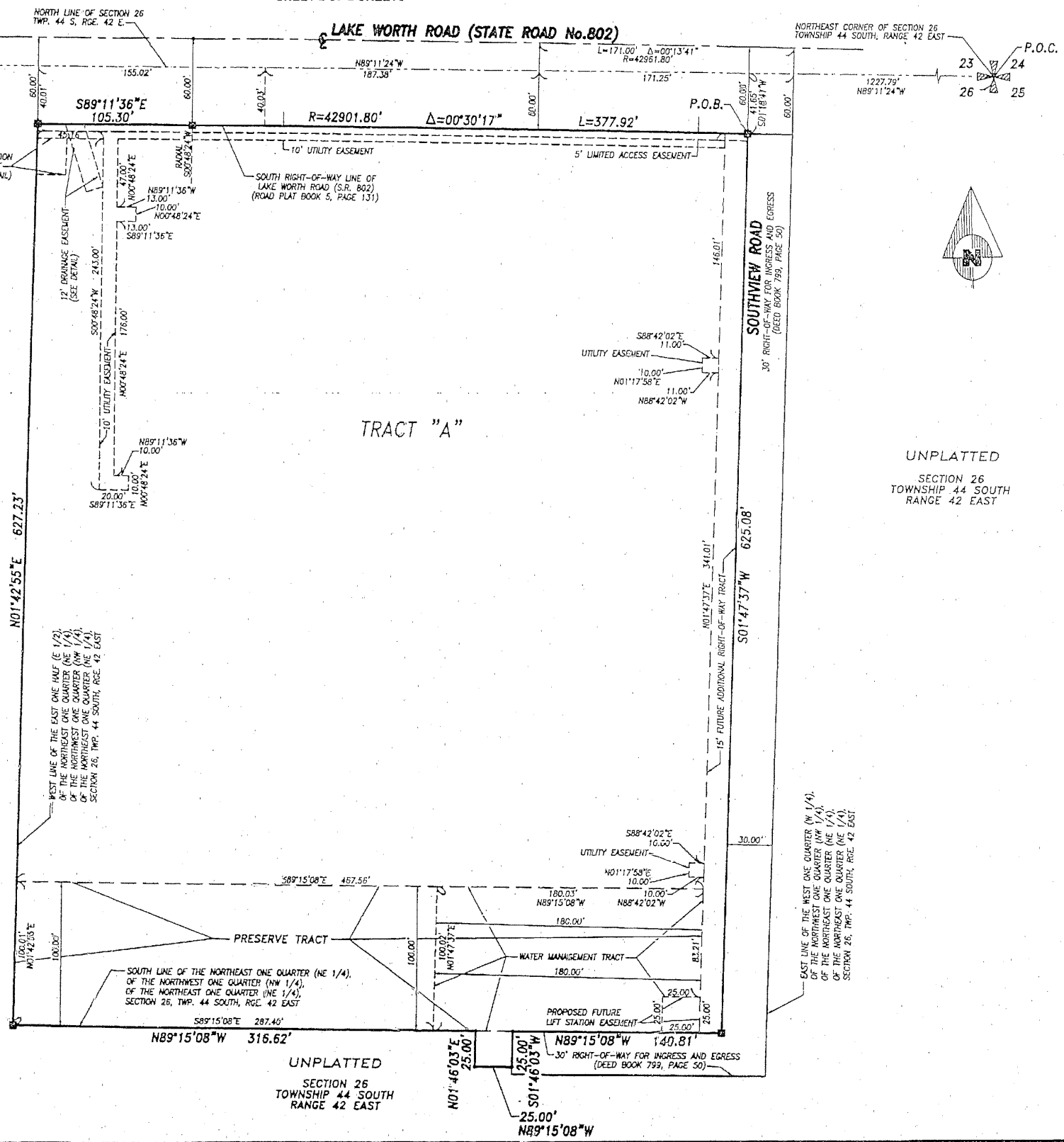
BEING A PORTION OF SECTION 26, TOWNSHIP 44 SOUTH, RANGE 42 EAST,
CITY OF GREENACRES, PALM BEACH COUNTY, FLORIDA

MAY 1983
SHEET 2 OF 2 SHEETS



UNPLATTED
SECTION 26
TOWNSHIP 44 SOUTH
RANGE 42 EAST

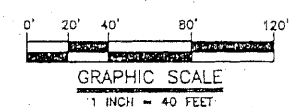
- LEGEND**
- P.R.M. SET PERMANENT REFERENCE MONUMENT, P.L.S. # 2297
 - SET IRON ROD WITH CAP, L.S. # 1376
 - △ CENTRAL ANGLE (DELTA)
 - CENTERLINE
 - SECTION
 - TOWNSHIP
 - RANGE
 - R RADIUS
 - L LENGTH OF ARC
 - LB LICENSED BUSINESS



UNPLATTED
SECTION 26
TOWNSHIP 44 SOUTH
RANGE 42 EAST

UNPLATTED
SECTION 26
TOWNSHIP 44 SOUTH
RANGE 42 EAST

- NOTES:**
1. ■ DENOTES SET PERMANENT REFERENCE MONUMENT (P.L.S. 2297)
 2. ○ DENOTES SET IRON ROD WITH CAP (L.S. 1376)
 3. ALL BEARINGS SHOWN HEREON ARE RELATIVE TO AN ASSUMED BEARING OF SOUTH 01 DEGREES 42 MINUTES 55 SECONDS WEST ALONG THE WEST LINE OF THE EAST ONE-HALF (E. 1/2) OF THE NORTHEAST ONE-QUARTER (NE 1/4) OF THE NORTHWEST ONE-QUARTER (NW 1/4) OF THE NORTHEAST ONE-QUARTER (NE 1/4) OF SECTION 26, TOWNSHIP 44 SOUTH, RANGE 42 EAST.
 4. WHERE DRAINAGE AND UTILITY EASEMENTS CROSS, DRAINAGE EASEMENTS SHALL TAKE PRECEDENCE.
 5. CONSTRUCTION OF STRUCTURES AND LANDSCAPING ON UTILITY OR DRAINAGE EASEMENTS SHALL BE ONLY WITH THE PERMISSION OF ALL UTILITIES OCCUPYING SAME.
 6. PALM BEACH UTILITIES SHALL HAVE THE RIGHT TO CONSTRUCT AND MAINTAIN WATER AND SEWER FACILITIES WITHIN UTILITY EASEMENTS AS SHOWN HEREON.
 7. BUILDING SETBACK LINES SHALL BE IN ACCORDANCE WITH CITY OF GREENACRES ORDINANCES, AND SITE PLAN APPROVAL.
- NOTICE:**
THERE MAY BE ADDITIONAL RESTRICTIONS THAT ARE NOT RECORDED ON THIS PLAT THAT MAY BE FOUND IN THE PUBLIC RECORDS OF PALM BEACH COUNTY, FLORIDA.



Bailey-Fotorny, inc.
land surveyors - planners
6060 10th Avenue North Suite 1 - Lake Worth, FL 33463-2621
Phone: 561-965-8787 Fax: 561-965-8281